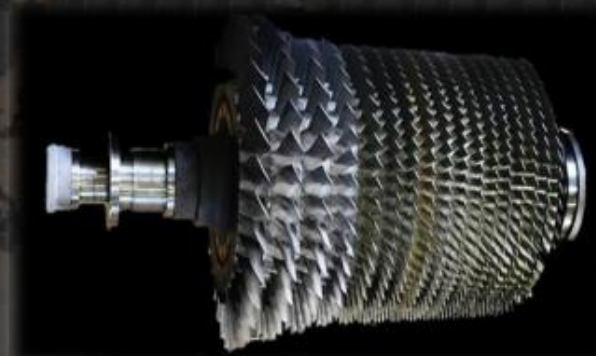


Refurbished GE FS9 Turbine & Compressor Rotor Model (E-9171)



Rotor Characteristics

GE FS(E) Turbine Rotor un-bucketed

GE FS9E Compressor Rotor

Manufacture: GE & JBE

Year of manufacture: 1996

Operation schedule: Peak unit

Operation cycle: Single cycle

Fired hours: 5,170 hrs

Remaining Lifetime Assessment (RLA)

Results Most parts were fit for repair

New forward stub shaft & new 17th compressor disc

manufactured by Ansaldo Thomassen.



Refurbishment Assembly / new parts

Turbine Rotor Scope

- Repair of Turbine disc (1st, 2nd & 3rd stage).
- Restoration of bearing journals
- Re-assembly & balancing of turbine

Compressor Rotor Scope

- Disassembly 17th Stage compressor blades
- Re-balding 17th stage compressor disc
- Apply ceramic coating on bladed disc stage 5-17
- Re-assembly & balancing of compressor rotor

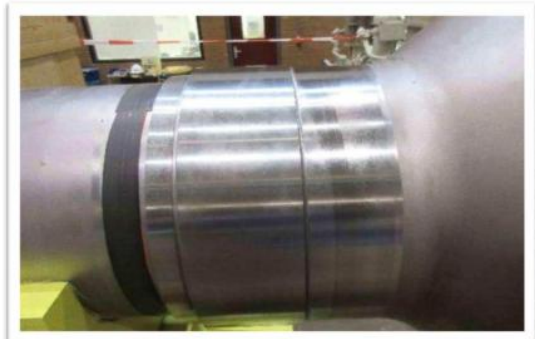
New parts

- Forward stub shaft turbine section
- Turbine rotor through bolt assembly
- 17th stage compressor disc
- Compressor rotor through bolt set

Major advantages

- New turbine forward stub shaft installed
- New stage 17 compressor disc installed
- Positive RLA results
- Very low running hours

Turbine Rotor



Compressor Rotor



